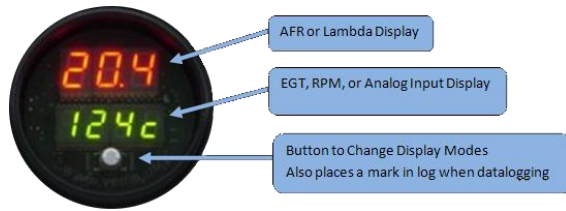


## EAW-52 Wideband and EGT



### Benefits:

- Easy to use
- Easy to mount - Standard 52mm format
- Simple installation
- Precision microprocessor control
- No setup or configuration necessary
- Field upgradable

### Features:

- Button to change display modes
- 3 Digit top LED
  - Lambda or AFR
  - Red or Blue color choices
- 4 Digit bottom LED
  - EGT, RPM, or Analog Input
  - Red or Green color choices
- Serial output for datalogging
- Reversible LED display mode for Heads Up Display
- Uses inexpensive Bosch LSU4 wideband oxygen sensor (included)
- Optional EGT thermocouple
- User defined analog output curve to supply a wideband signal to a standalone ECU, logger, or emulate a narrowband for the factory ECU
- Analog input for logging or display
- Tach input for logging or display



1994 Porsche 911 Carrera 2 (993)  
440hp/480ft-lb Tuned by vems.ee

CONTACT A REPRESENTATIVE TODAY:

# VEMS

150 Belair Dr  
Colchester, VT 05446 USA

(802) 488-0163  
[www.vems.us](http://www.vems.us)

# EFI



express

[www.efiexpress.com](http://www.efiexpress.com)

# VEMS

## Versatile Engine Management Systems



VEMS gives you the full engine control that you need to bring out the best performance from your turbo/supercharged or normally aspirated engine.

## V3 ECU

Our leading product with a very strong feature set. Has the ability to control the smallest of engines to the largest you may want to build. The known horsepower record so far is 2175 hp in Robert Christell's Beast. The known economy record is 3700 miles per gallon in the Hungarian Shell Ecomarathon vehicle.

### Key Features

- Sequential Control of up to 8 banks of injectors
- Built in transistorized coil igniters for up to 8 coils
- Built in Wideband controller
- Exhaust Gas Temperature
- Anti-lag
- Boost control
- Launch control
- Configurable control of low and high current drivers for lights, relays and solenoids
- Field upgradable software
- Aluminum Case w/ Sealed Connectors
- Datalogging via serial connection or optional SD card interface
- Advanced Idle Air Control
- Selectable maps
- Wheelspeed input
- AiM Sports data output

VEMS utilizes an advanced RISC microprocessor and surface mounted component technology, with state of the art electronics to allow you to precisely control your engine.

## Common Triggers

Native Auditrigger

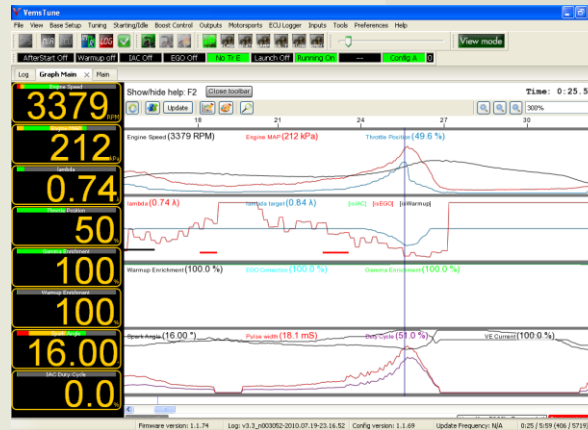
60-2	36-1
24+1	12+1
8	6
5+1	4

Many more, please ask.

## Motronic Plug and Play Option

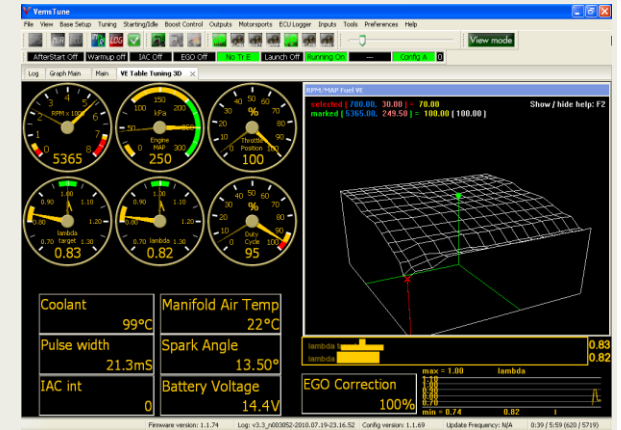
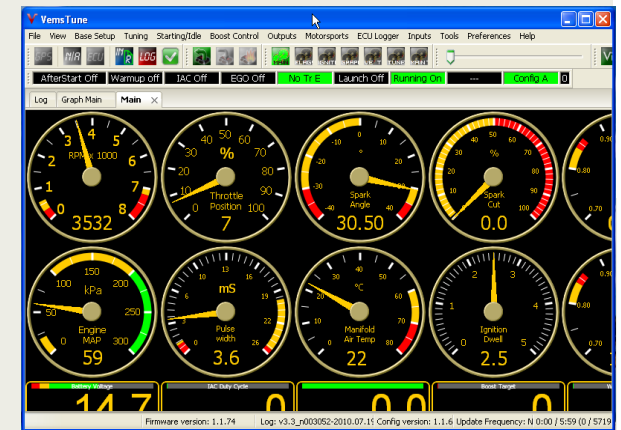
“The 10 minute standalone ECU install”

Your UrS4/S6, 200q20v, S2, or RS2 (others available, ask for availability) car can be transformed in a matter of minutes. Disconnect the factory ECU and install the VEMS plug and play. Swap the crank trigger wires on the connector, or use the optional adapter, and start your car. It's literally as easy as that. Install the wideband sensor and sub-harness for excellent feedback in closed loop and tuning.



## Tuning Software

Works with Wideband and ECU product  
Easy access to all the features  
Tune by Statistics feature  
Advanced trigger logging  
Log capture and playback  
GPS support for track mapping  
Very easy firmware upgrade



Manufactured and assembled in Europe

